

Seating Variants. Mercedes-Benz Buses and Coaches.



Mercedes-Benz
The standard for buses.



City. Country. Seat.

The seat plays a significant role in ensuring whether or not a passenger has a pleasant journey in a coach or public service bus. For this reason, the right combination of up-holstery, seat frames, seat bases and seat and back cushions is crucially important.

For more than 130 years, Mercedes-Benz has striven to achieve the optimum seating configuration for different types of buses and applications while consistently drawing on the latest ergonomic knowledge and insights in pursuit of this goal. Mercedes-Benz exploits these many years of experience to develop the most advanced bus and coach seating manufactured to the highest quality standards. Using almost 100 different components and a wide selection of colours and durable materials, we produce an individual seat that perfectly matches the needs and requirements of passengers and the driver. After all, the seats on a bus are the personal calling card of every bus company.



Contents

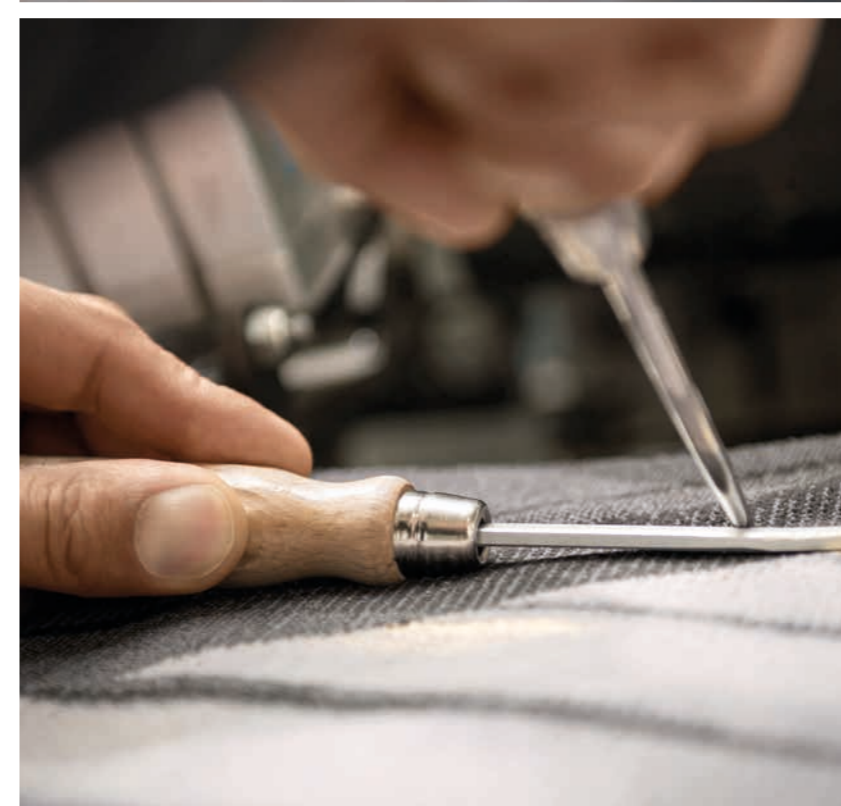
Introduction	2	Citaro/CapaCity	34
Quality	4	CityStarEco	38
Colour & Trim	6	CityStarFunction	40
Online configurator	8	InterStarEco	42
Tourismo	10	Driver's seats	44
TravelStarEco	12	Grammer	46
TravelStarEco Softline	14	ISRI	47
TravelStarEco Luxline	16	Minibuses	48
InterStarEco	18	CityStarEco	52
Intouro	20	InterStarSprinter	54
InterStarEco	24	TravelStarSprinter	58
TravelStarEco	26	TravelStarXtra	60
Citaro Ü	28	Driver's Comfort seat	62
InterStarEco	32	Driver's swivel seat	63
		Seating variants	64
		Equipment variants/Mounted parts	66



Quality that lasts.

The constant search for innovative materials and their use during manufacture have made our fabrics more robust and endowed our materials with enduring flexibility. This ensures that our customers enjoy a perfect seat, individually adapted to suit their bus and perfectly adjusted for passengers and drivers.

As a consequence, practically every customer requirement is satisfied – from comfortable coach travel flair to sober, unpretentious functionality. Seats from Mercedes-Benz are distinguished by their particularly high quality – whether on a public service bus moving through urban traffic or during interurban journeys where passengers can enjoy the beauty of nature in comfortable.





The best advice.

Whether elegantly luxurious or refreshingly modern, our experienced design team will provide you with individual support and advice in our DesignStudio through helpful proposals and suggestions regarding fittings and equipment during the design of your bus. And because determining which fittings and equipment should be used on a bus or coach is always a very important part of the consultation process, we provide this service at all times wherever we are represented. This means that you can profit from this service in the Mercedes-Benz DesignStudio, at your own location or very close to your address.

You can avail of this service at any time in our DesignStudio in Mannheim. Our Colour & Trim designers will provide you with individual advice, and you can select seats, materials, fabrics and patterns on site, with the opportunity to experience your chosen combination live and the texture of the materials used at first hand. Our consultants are also at your service at all times in our sales offices in Hamburg, Berlin, Munich and Istanbul. Your wishes take on real form, thanks to our interior configurator and patterns. You can also obtain exclusive advice from our DesignStudio team in Mannheim in a video conference. In a virtual face-to-face presentation, our designers will show you their suggestions and tell you about the latest trends. But we also take our customers' busy schedule into consideration. We would be delighted to visit you and advise you on site. Every Mercedes-Benz sales force representative has access to a wealth of presentation materials, enabling them to present the full equipment range on site. And these presentation materials are not just restricted to fabric samples. The Mercedes-Benz interior configurator can create three-dimensional and realistic representations of customer-specific combinations, giving you a first-hand impression of your individual interior design.



Your ideas made real.

Test the online design configurator today.

- Use your tablet to scan the QR code on this page.
- Open the link displayed with Internet Explorer.
- The online design configurator appears in your browser.
- Okay, now you can get started!

You can also configure a variety of fittings for the interior of your bus and experiment with these from the comfort of your own home. Mercedes-Benz has created an online design configurator to make seating and equipment wishes visible as early as the planning phase. State-of-the-art technology can generate three-dimensional and realistic representations of the most varied combinations, and fabrics, curtains, hand-rail colours and ceiling and wall coverings can be freely selected. All this ensures that you enjoy absolutely boundless possibilities in realising your design ideas.



The online design configurator is available at <http://design-studio.bus.mercedes-benz.com> on your PC or tablet.





The Tourismo.

TravelStarEco. InterStarEco.



TravelStarEco.

In general, the new Tourismo RHD also uses the proven seating which was successfully employed in its predecessor. Manufactured by us, it is extremely comfortable, light and of a very high quality. Numerous variants are available. Depending on the particular purpose, the coach seat can either be used as a functional basic version or in an exclusive design. The variety of equipment options available is almost boundless. The coach seat can be supplemented with every conceivable accessory. Whether it is equipped with a seat number, a folding tray, a luggage net, a footrest or a Comfort headrest – the TSE is an economical all-rounder for coach and interurban journeys. The variant bearing the Mercedes star on the backrest lends a particularly exclusive note to seating. A broad selection of fabric and colour combinations is available for seat mirrors and backrests, head pieces and piping, depending on the seating variants involved.

Tourismo | TravelStarEco | Equipment features

Standard equipment

- 2-point seat belt
- Grab handle, integrated in seat back, aisle side
- Backrest, fixed with aisle-side armrest
- Without lateral adjustment
- Luggage net
- Long seat cushion
- Upholstery cover with separate fabrics for rear, backrest and sides



TSE Softline.

The new Softline seating is a unique development in this sector. The quilted lozenge pattern in the centre of the squab and backrest draws comparisons with a luxury class Mercedes-Benz car and greatly enhances the passenger compartment.

Softline seating is available in a single or two-tone finish with an optional leather head piece and a decal bearing the Mercedes star in the backrest.

Tourismo | TSE Softline | Equipment features

Standard equipment

- Softline upholstery, diamond look
- 2-point seat belt
- Grab handles integrated in the backrest, aisle side
- Luggage nets on seat backs and partition

Optional extras

- Integrated armrest, aisle-side, swivels
- Grab handles integrated in the backrest, aisle and wall side
- Adjustable backrest
- Footrests
- Folding trays
- Fabric pocket



TSE Luxline.

The Luxline upholstery variant is the most sophisticated coach seating available in the Mercedes-Benz range. Distinguished by a striking side crease on the squab and backrest, Luxline is a premium-class design which offers even more elaborate upholstery.

Whether they choose fabric, Composition or a range of décor variants – the TSE Luxline gives business owners plenty of creative scope when it comes to giving their company that individual, superior-class image. The Luxline variant can also be upgraded with Comfort headrests. The adjustable side elements of the headrests provide support and relaxation during the journey.

Tourismo | TSE Luxline | Equipment features

Standard equipment

- Luxline upholstery
- Squab approx. 460 mm

Optional extras

- Seat covers, available in multiple colours
- Seat cover in Composition fabric combination
- Seat cover in Composition
- Comfort head restraint



InterStarEco.

The Turismo RH is extremely versatile. Whether in regular service or for excursions or short trips, robust InterStarEco seating ensures that passengers enjoy a comfortable, relaxed ride. The fully upholstered seat meets all the requirements for regular service and interurban travel. Equipped with a 2-point seat belt and grab handles, it is fitted out for every operational purpose.

Turismo | ISE | Equipment features

Standard equipment

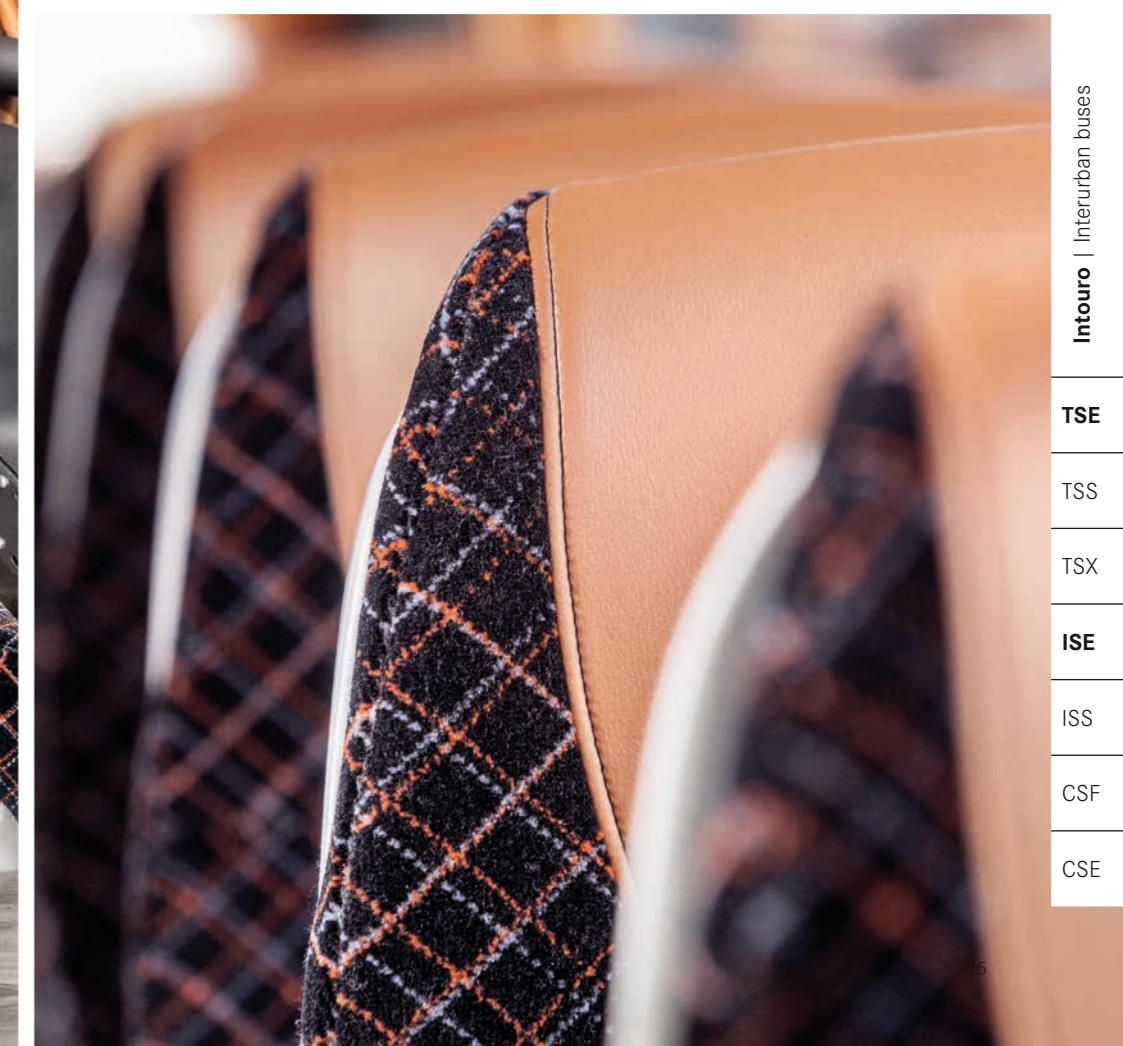
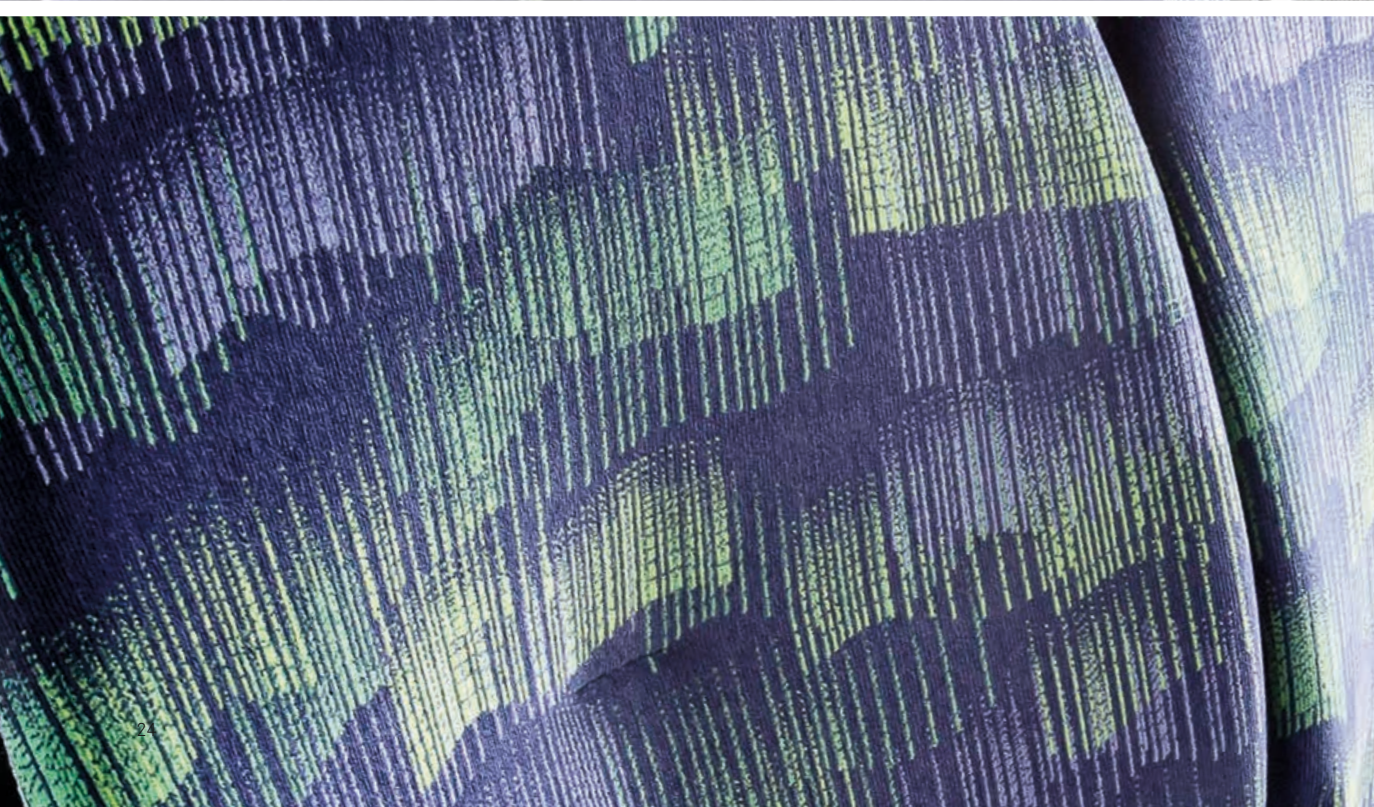
- 2-point seat belt
- Backrest, fixed
- Medium-height back support
- 1 corner handle per double seat attached on aisle side





The Intouro.

InterStarEco. TravelStarEco.





InterStarEco.

If you are using the Intouro as a tough all-rounder in 24/7 interurban transport, then you need the right seating for this purpose. The hard-wearing InterStarEco upholstery has a 2-point seat belt and horizontal grab handle – and these are only two examples of the many standard ISE equipment options. Sophisticated additional features such as a design head piece or anti-vandalism designing can also be configured.



Intouro | InterStarEco | Equipment features

Standard equipment

- 2-point seat belt
- Backrest, fixed
- Aisle-side corner handle

TravelStarEco.

The Intouro is also ideal for touring use – with TravelStarEco. Passengers feel completely at ease on its broad upholstered squab, even on longer bus journeys. Diverse accessories such as folding trays, footrests and adjustable backrests further enhance the comfort of your passengers. Its structure is also one of its strengths. Attached to C-rails mounted on the wall and platforms, seat spacing can be varied as required and desired. An optional and specially shaped seat mount provides easy access to the seats if seating places are frequently changed.

Intouro | TravelStarEco | Equipment features

Standard equipment

- 2-point seat belt
- Backrest, fixed
- Integrated aisle-side corner hand grips





The Citaro Ü.

InterStarEco.



InterStarEco.

The time spent by passengers on the bus increases considerably with connections to outlying suburbs. This also increases the demands made on a seat in terms of comfort and safety. Consequently, in addition to being comfortable, the fully upholstered InterStarEco seat is also fitted with aisle-side corner handles and horizontal grab handles. It can also be optionally equipped with a 2-point seat belt.

Where required, an anti-vandalism version of the ISE is also available. Optionally, a luxury variant of the ISE can be ordered with a design head piece.

Citaro Ü | InterStarEco | Equipment features

Standard equipment

- Backrest, fixed
- Aisle-side corner handle
- Robust back support

Optional extras

- 2-point seat belt
- 3-point seat belt



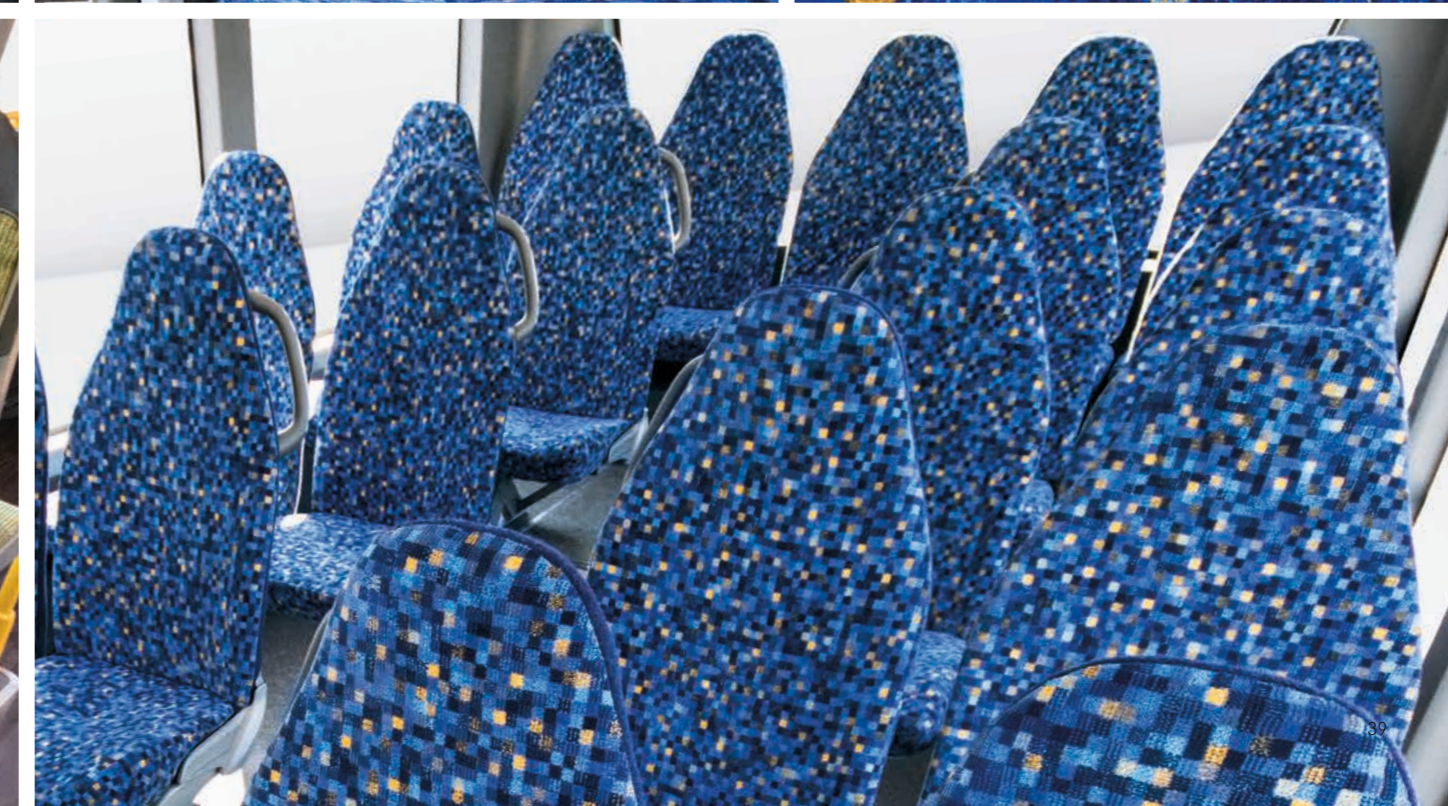
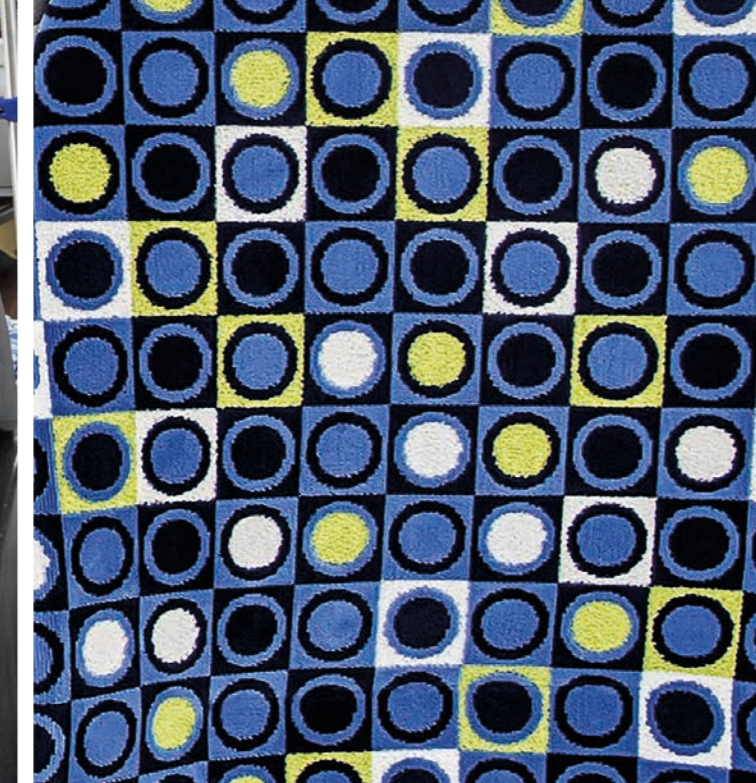
CITARO

MA MB 013

The Citaro.
The CapaCity.

CityStarEco. CityStarFunction.

InterStarEco.



Citaro/CapaCity | CityStarEco | Equipment features

Standard equipment

- Grab handle
- Shell tops with different variants for handrail mounting
- Cantilever suspension mounting
- Exchangeable thin upholstery



CityStarEco.

A seat that is exposed to the daily stress of public transport needs to be exceptionally tough and resistant. The CityStarEco hard bucket seat is distinguished by its extreme stability and a high level of functionality while still offering a great deal of comfort. Its coordinated components unify modern design with the demands of transport businesses for efficiency and durability.

If you do not install the aisle-side seat mounts, it is possible to exploit a variable mounting option where the cantilevered seat frames are mounted onto the side wall. This allows you to vary the seat spacing as required and provides easy access for cleaning and maintenance. You can order the modular CSE with or without upholstery and equip it with a range of different locating plates for handrails.



CityStarFunction.

The CityStarFunction is the very definition of functional design and comfort. It also meets the needs of demanding passengers in regular services, thanks to its exceptionally robust and resistant design. The CSF is available with thin upholstery as a component seat. This upholstery can be removed from the aluminium-reinforced plastic frame for cleaning or repair.

The seat is attached on the wall side to the cantilever seat frame, facilitating a speedy passenger turnaround and making cleaning much easier.

Citaro/CapaCity | CityStarFunction | Equipment features

Standard equipment

- Grab handle
- Cantilever suspension mounting
- Exchangeable thin upholstery
- Seat tops with different variants for the handrail mounting





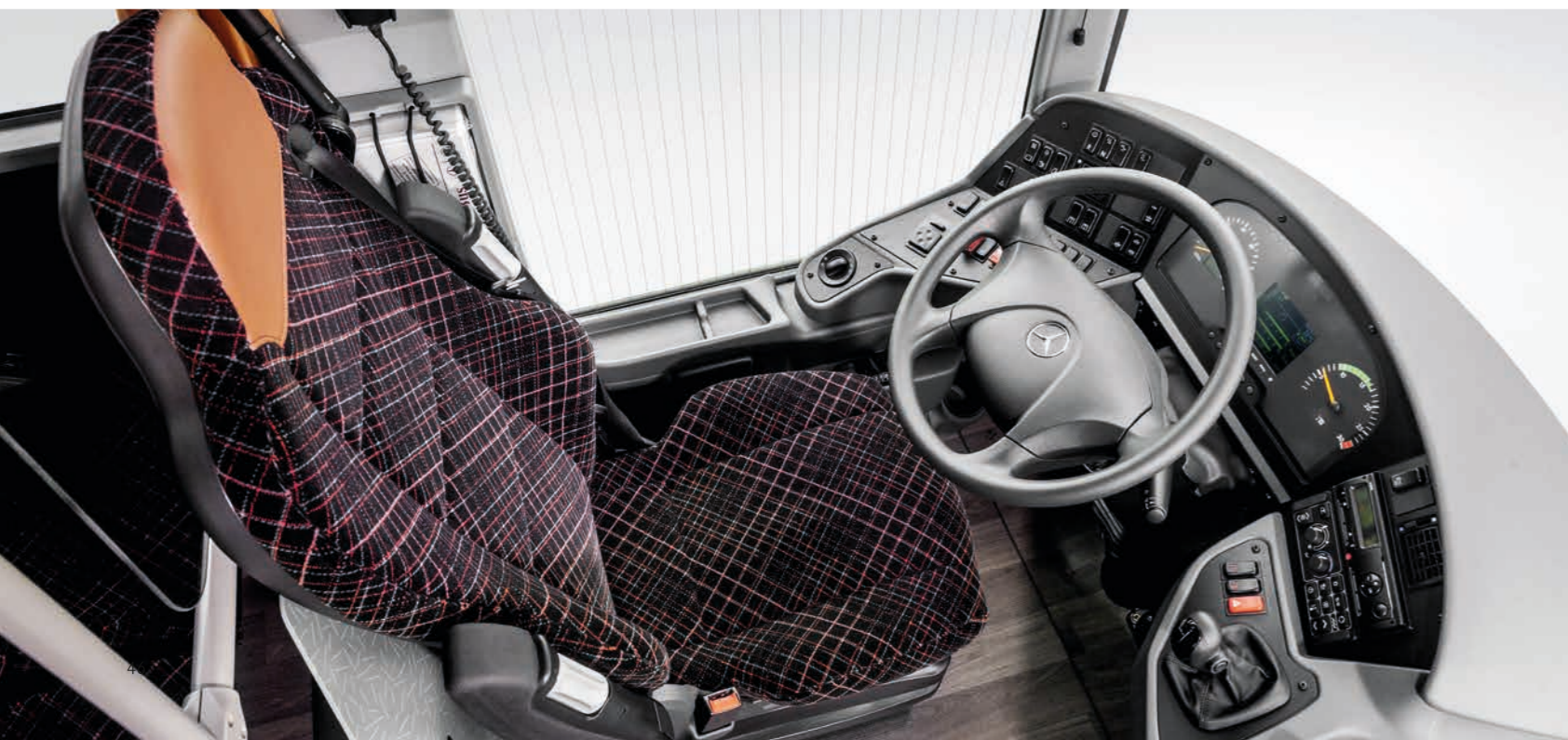
InterStarEco.

The InterStarEco is the ideal seating variant for buses intended for long-distance travel. Its fully upholstered seating offers practically the same level of comfort as a coach and is, consequently, ideally suited to the needs of your passengers.

Citaro/CapaCity | InterStarEco | Equipment features

Standard equipment

- Backrest, fixed
- Aisle-side corner handle
- Cantilever suspension mounting



Driver's seats.

Grammer. ISRI

Grammer.



The driver's seat in a bus is a decisive factor when it comes to driver performance and health. A pleasant and comfortable seat can therefore play an important role in protecting and supporting the back, neck and spine. Good seating can improve concentration and makes a bus journey safer for driver and passengers alike. Grammer driver's seats can be quickly and easily adjusted to meet the needs of any individual. The ergonomic seat design contributes to the well-being and steady concentration of the driver, enabling him to get the bus safely to its destination.

Grammer | Linea/Tourea | Equipment features

- 3-point seat belt system
- Available where required with a rotating adapter
- Optional seat climate control
- Pneumatic side contour adjustment
- Pneumatic lumbar support system
- Adjustable seat depth
- 200 mm lengthwise adjustability
- The material design of the driver's seat can be adapted to match passenger seating

Isri.



The ISRI driver's seat also meets the increasing challenges encountered in traffic which drivers are exposed to today. It was developed through cooperation between the disciplines of research, development, product design and ergonomics and, as a consequence, is distinguished by health-promoting characteristics, an example being the reduction of stress caused by vibration. Its ergonomic shape also aids concentration and provides optimum support for the driver's sitting posture.

ISRI | NTS2 | Equipment features

- Adjustable to meet individual requirements
- Integrated 3-point seat belt system
- Breathable and extremely resistant cover material
- Easy to use
- Ergonomic shape
- Reduced susceptibility to vibration
- The material design of the driver's seat can be adapted to match passenger seating





Minibuses.

CityStarEco. InterStarSprinter.
TravelStarSprinter. TravelStarXtra.

Driver's Comfort seat.
Driver's Swivel seat.



TSE

TSS

TSX

ISE

ISS

CSF

CSE

CityStarEco.

The CityStarEco (CSE) is familiar from being the option used in the Mercedes-Benz Citaro. This public-transport bus seat is a heavy-duty and resistant hard bucket design that meets all the requirements of any public transport line. It blends urbane design with the demands of transport businesses for economy and functionality. As a standard, the CSE is fitted with back and seat cushions and is available in the "Standard" and "Priority seat" width versions. The seating can be optionally upgraded with armrests. The CityStarEco passenger seat is a standard component of the Sprinter City minibus series.

Sprinter City | CityStarEco | Equipment features

Standard equipment

- Upholstered backrest (clip-on)
- Upholstered squab (clip-on)
- Seat covers from the Mercedes-Benz city bus collection
- Grab handles
- Handrail mountings
- Seats mounted in tracking, foot sidewall

Optional extras

- Armrest, aisle side



InterStarSprinter.

As a fully upholstered seat, the InterStarSprinter (ISS) completely lives up to its reputation for comfort even on relatively long journeys. A high backrest, cosy seat cushion and freely adjustable legroom are the key features of this seat variant. To achieve a customised seating arrangement or interior design, the seats can be optionally removed or moved freely on airline rails. In this case, assembly and disassembly are realised using a practical quick-change system. The InterStarSprinter is provided as a standard in all Sprinter Transfer series models and in the Sprinter Mobility 35 and 45. In the Sprinter City series, the ISS is available as special equipment in the range with two-point and three-point seat belt. Other seat options for the ISS are a side armrest and a side grab bar.



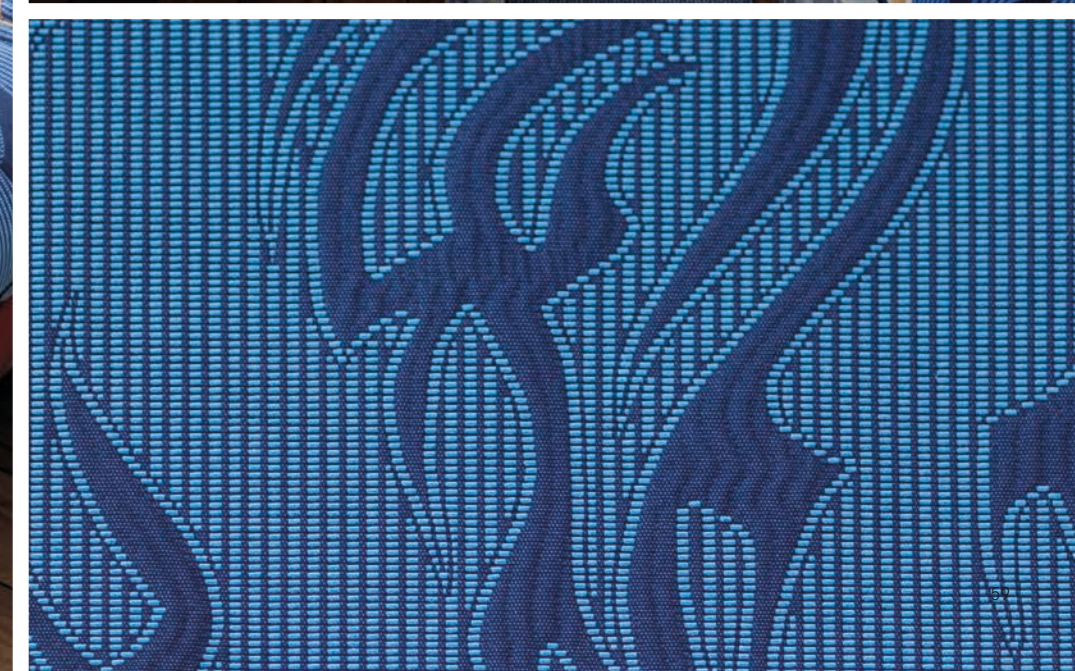
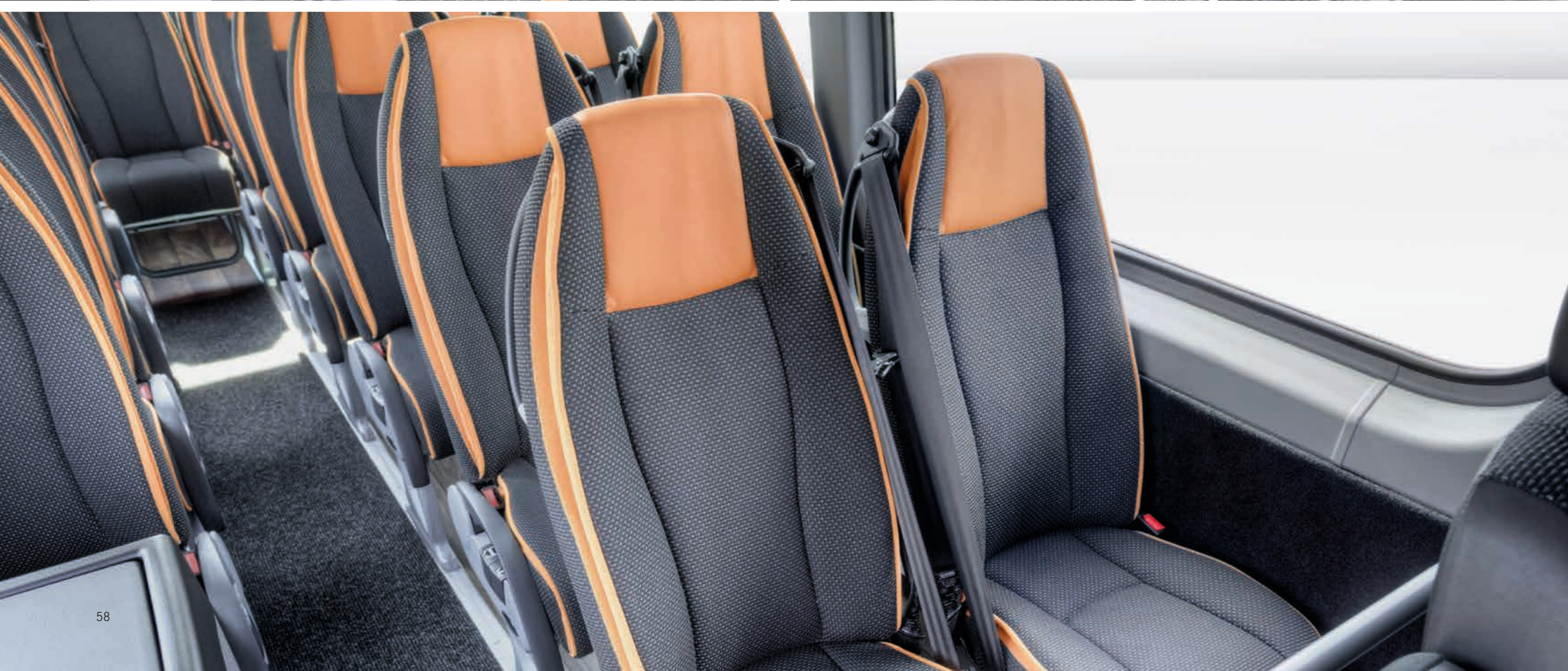
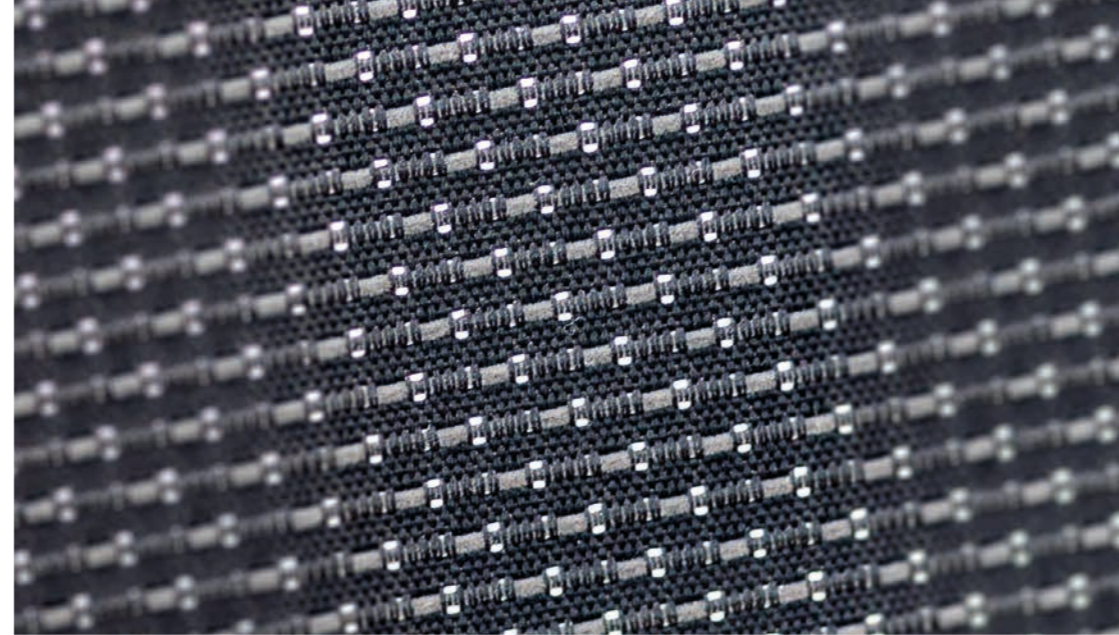
Sprinter City, Transfer, Mobility | InterStarSprinter | Equipment features

Standard equipment

- Heavy-duty seating
- 2-point seat belt
- Seat width 420 mm
- Rigid backrest
- Rear entirely covered with needle felt
- "Tunja black" seat cover fabric

Optional extras

- 3-point seat belt
- Rear in MB and Composition fabric
- Seat cover fabric from the Mercedes-Benz interurban collection
- Quick-change system for seat assembly
- Luggage net
- Armrest or arm arc, aisle side
- Corner grab handle



TravelStarSprinter.

The TravelStarSprinter (TSS) minibus seat is the fruit of consistent further development of the proven InterStarEco seat, but with two additional comfort features. Suitable for long-distance journeys, the fully upholstered TSS seat is fitted with a standard armrest with height adjustment on the aisle side and a backrest with adjustable tilting. Anybody who values even greater comfort can order options including aisle-side seat adjustment, footrests or folding trays.

You can also choose a more comfortable design for the cushions on the TSS. The “De Luxe” and “Comfortline” variants are not only comfortable and look sophisticated – they also invite passengers to settle down and enjoy a relaxing travel experience.

The TravelStarSprinter is supplied as standard in the Sprinter Travel 45 and 55 models. It is also available as special equipment in the Sprinter Transfer and Sprinter Mobility 35 and 45.

Sprinter Travel, Transfer, Mobility | TravelStarSprinter | Equipment features

Standard equipment

- Adjustable backrest
- Seat covers from the interurban collection, rear entirely covered with needle felt
- 2-point seat belt
- Adjustable armrest, aisle side

Optional extras

- 3-point seat belt
- Seat laterally adjustable on aisle side
- “De Luxe” or “Comfortline” upholstery
- Folding tray with cup holder
- Luggage net
- Footrests
- Head restraint cover
- Composition head piece
- Composition piping
- Material piping



TravelStarXtra.

The TravelStarXtra (TSX) is reserved for the Sprinter Travel 65 in the Mercedes-Benz minibus range and has already proven itself in the Travego. It combines excellent travel comfort with optimum functionality and an unmistakable design.

The TSX is optionally available in Softline and Luxline upholstery variants. Whether a multi-coloured material combination with a Composition headrest, a Composition/material combination or full Composition upholstery – the TSX is in a class of its own. It can also be supplemented with a variety of accessories such as a folding tray, litter bin or cup holder.

Sprinter Travel 65 | TravelStarXtra | Equipment features

Standard equipment

- Adjustable backrest
- Tilting armrest integrated on aisle side
- Seat panel, aisle side
- Seat covers from the coach collection
- 2-point seat belt
- Luggage net

Optional extras

- “Softline” or “Luxline” upholstery
- 3-point seat belt
- Wall-side armrest
- Folding tray with cup holder
- Litter bin on seat frames, aisle side
- Bag hook on integrated grab handle
- Footrests
- Head restraint cover
- Composition head piece
- Composition piping
- Material piping

Driver's Comfort seat.

A relaxed seating position is the basic prerequisite for the well-being of any driver. Thanks to its varied adjustment options, the driver's Comfort seat in the Sprinter minibus can be ideally adapted to suit individual sitting requirements. The durable and ergonomically shaped seat also provides excellent lateral support.

On request, all Sprinter driver's seats can be fitted with seat heating and a Comfort headrest. The driver's Comfort seat is a standard component of the Sprinter Transfer series, the Sprinter Travel 45 and 55 models and the Sprinter Mobility 35 and 45.

Sprinter | Driver's Comfort seat | Equipment features

Standard equipment

- Adjustable backrest
- Longitudinal adjustment
- Height adjustment
- Seat cushion inclination
- Mechanical lumbar support
- Adjustable armrest
- "Tunja black" seat cover, breathable

Optional extras

- Seat covers in passenger seat design



Driver's swivel seat.

Long journeys are no problem for minibus drivers. The driver's Comfort swivel seat ensures an ideal, ergonomic sitting posture which provides relief for back muscles.

The swivel seat supporting frame absorbs the impacts caused by uneven roads and gently dampens them down. This is beneficial for the spinal column and intervertebral discs in particular. During this adaptation, the swivel seat can be individually adjusted to the weight of the driver (up to 130 kg). Five additional adjustment options mean it can be ideally adapted to individual body contours.

The driver's Comfort swivel seat is a standard component in the Sprinter Travel 65 and all models in the Sprinter City series.

Sprinter | Driver's Comfort swivel seat | Equipment features

Standard equipment

- Mechanical/hydraulic suspension
- Adjustable backrest
- Longitudinal adjustment
- Height adjustment
- Seat cushion inclination
- Mechanical lumbar support
- Adjustable armrest
- "Tunja black" seat cover, breathable

Optional extras

- Seat covers in passenger seat design

Seating variants.

TravelStarEco (TSE)

Excursion and touring coach seating

Standard equipment

- 2-point seat belt on all passenger seats
- Backrest, fixed
- Integrated aisle-side corner hand grips



TravelStarSprinter (TSS)

Excursion and touring coach seating

Standard equipment

- 2-point seat belt on all passenger seats
- Adjustable backrest
- Seat covers in black fabric
- Rear entirely covered with needle felt
- Armrest, aisle side



TravelStarXtra (TSX)

Excursion and touring coach seating

Standard equipment

- 2-point seat belt on all passenger seats
- Adjustable backrest
- Backrest with luggage net
- Armrest, aisle side
- Grab handles, aisle and wall side
- Luggage net



InterStarEco (ISE)

Interurban and city bus seating
Fully upholstered seat

Standard equipment

- 2-point seat belt on all passenger seats
- Backrest, fixed
- Aisle-side corner handle
- Robust back support



InterStarSprinter (ISS)

Interurban and city bus seating
Fully upholstered seat

Standard equipment

- 2-point seat belt on all passenger seats
- Quick-change seat mounting system on airline rails
- Attached grab handle
- Rear entirely covered with needle felt



CityStarFunction (CSF)

City bus seating

Built from individual components with aluminium support structure and plastic injection-moulded parts

Standard equipment

- Backrest, fixed
- Cantilever seat frame
- Exchangeable thin upholstery
- Single or double seat versions or as a mother-and-child seat
- With and without grab handle, with integral stanchion holder on grab handle on left or right



CityStarEco (CSE)

City bus seating

Built as self-supporting injection-moulded seat shell

Standard equipment

- Backrest, fixed
- Cantilever seat frame
- Exchangeable thin upholstery
- Single or double seat versions or as a mother-and-child seat
- With and without grab handle, with integral stanchion holder on grab handle on left or right

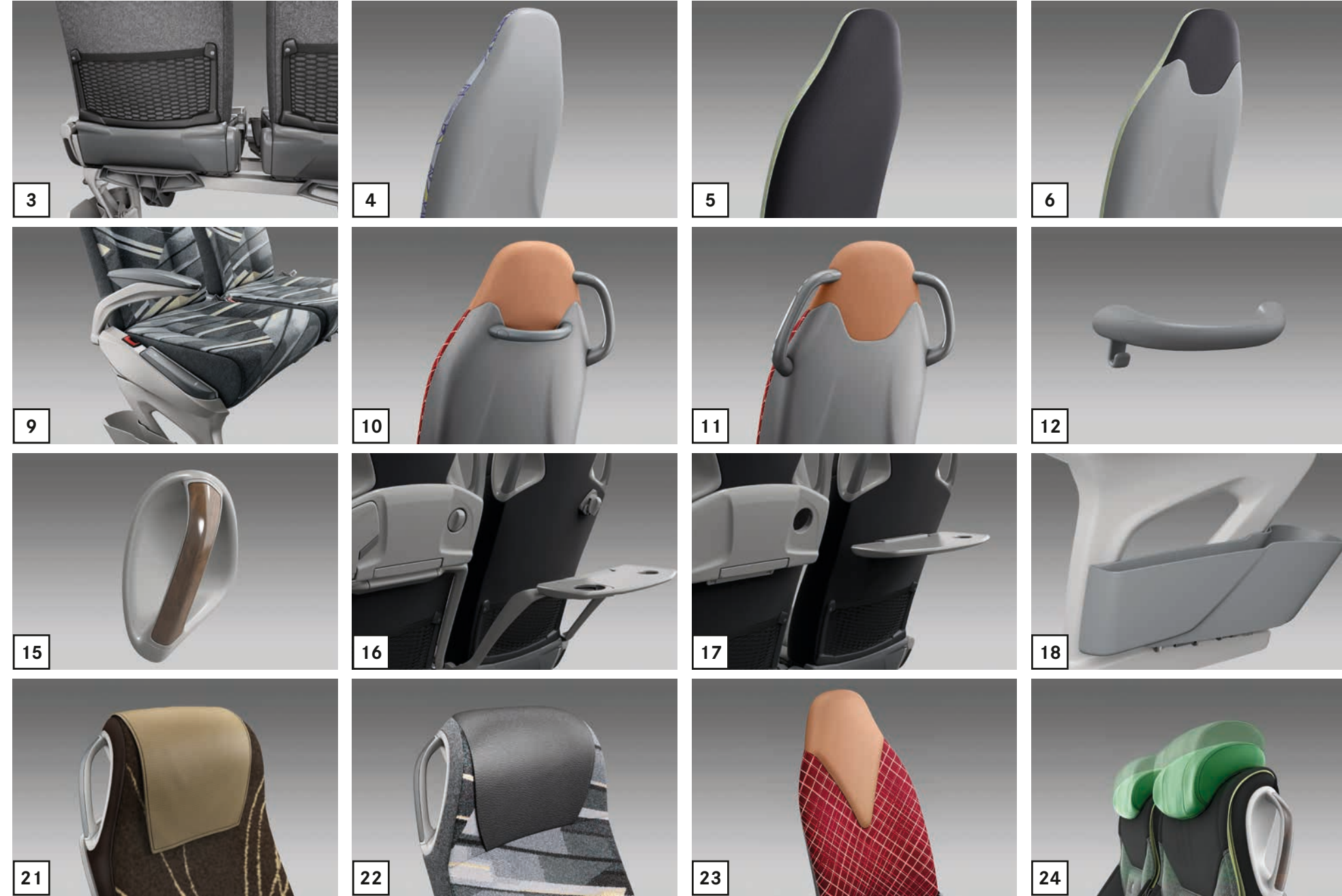


	Tourismo RHD	Tourismo RH	Intouro	Citaro Ü	Citaro / CapaCity	Sprinter Travel	Sprinter Transfer	Sprinter City	Sprinter Mobility
TravelStarEco (TSE)	●	○	○						
TravelStarSprinter (TSS)						●	○		○
TravelStarXtra (TSX)						●*			
InterStarEco (ISE)		●	●	●	○				
InterStarSprinter (ISS)							●	○	●
CityStarFunction (CSF)				○	○				
CityStarEco (CSE)				○	●			●	

*only available for Sprinter Travel 65

Equipment variants and mounted parts.

- 1 Lateral adjustment
- 2 Fabric pocket
- 3 Luggage net
- 4 Anti-vandalism backrest
- 5 Rear of the backrest covered with needle felt
- 6 Rear of the backrest with medium-height back support
- 7 Armrest or arm arc aisle-side
- 8 Centre armrest
- 9 Cranked armrest on the aisle side
- 10 Attached grab handle, one side only
- 11 Attached grab handle, both sides
- 12 Attached grab handle with bag hook
- 13 School bus grab handle
- 14 Grab handle with handrail holder on the aisle side
- 15 Grab handle integrated into backrest
- 16 Folding tray A
- 17 Folding tray B
- 18 Litter bin on seat frames, aisle-side
- 19 Ashtray on passenger seat
- 20 Footrests
- 21 Head restraint cover
- 22 Composition head piece
- 23 Composition design head piece
- 24 Comfort head restraint



		Seat - general	Backrest	Armrests and handles	Tables	Mounted parts	Covers	Design
TSE	TravelStarEco (TSE)	●	○	○	○	○	○	○
TSS	TravelStarSprinter (TSS)	●	○	○				○
TSX	TravelStarXtra (TSX)	●	○	●				○
ISE	InterStarEco (ISE)	●*	○					○
ISS	InterStarSprinter (ISS)	●	○	○				○
CSF	CityStarFunction (CSF)		○					
CSE	CityStarEco (CSE)		○					

For Citaro Ü: special feature. For city buses: not available

About the information in this brochure.

Information about the product may be subject to change after this brochure went to press (11/17). The manufacturer reserves the right to make changes in the design or form, deviations in colour and changes to the scope of supply during the delivery period, in so far as the changes or deviations are reasonable for the customer and taking the interests of the seller into consideration. Illustrations may also contain accessories and special equipment that do not form part of the standard scope of supply. Colours may vary for typographical reasons.

This brochure may also contain models and support services that are not available in some countries. Statements concerning statutory, legal and tax regulations and their effects are only applicable in the Federal Republic of Germany at the time this brochure went to press. Therefore, please contact your Mercedes-Benz sales representative for the latest binding version.

www.mercedes-benz.de/omnibus

EvoBus GmbH, Mercedesstrasse 127/6, 70327 Stuttgart BUS/MPM-B · MB-S-1-EN-11/17

